

the ultimate
sightseeing
experience

www.audioconexus.com



AUDIOCONEXUS





“By embracing our culture and heritage and our relentless commitment to innovation, we are transforming the Gray Line Australia customer experience. We have chosen AudioConexus in view of its outstanding record in developing and executing GPS Tour solutions in many companies from diverse industry sectors within tourism. Drawing on this expertise, Gray Line Australia has been able to deliver new tour commentaries using professional voice talents, musical backgrounds and sound effects in Japanese and Mandarin, significantly enhancing our foreign language experiences on our Great Ocean Road Tours.”

Joost Timmer, Sales and Marketing Manager
Gray Line Australia, Melbourne

The Next Generation of GPS Tour Entertainment

TriggerPOINT is a multilingual GPS Tour Entertainment system, developed and designed specifically for location based entertainment on buses, boats, trolleys, trains, and trams.

This ground-breaking GPS Tour system opens up a new world of possibilities for sightseeing companies that value high-quality tour products and new opportunities for profit and growth.

Our tour solutions provide your tour coaches or vessels with high-quality products designed for durability and ease-of-use. This system facilitates automated, wireless, GPS triggered, and simultaneous multilingual pre-recorded commentary. It can also be used to deliver group tours by a live guide.

Designed specifically for mobile applications where portability and flexibility are essential in fleet management, the AudioConexus wireless tour solution removes the operational and visitor restrictions affiliated with hardwired solutions.

TriggerPOINT

Personal Body Worn Transmitter



High-quality, lightweight and durable body-worn transmitter

The transmitter will broadcast your driver, interpreter or tour guide's voice to everyone in their group. The system is wireless and there is no microphone to carry

A head-worn microphone allows a guide's voice to be clearly heard up to 150 feet away

The system supports multiple guides - up to 8 guides can be speaking at the same time on different channels for personalized communication with their tour groups

Easy-to-use 16-channel selection

Full-day usage with no charging

TriggerPOINT

Personal Wireless Receiver



High-quality, lightweight and durable wireless receiver

Easy-to-use language selection for multilingual wireless audio tours

Includes headsets for optimal performance

Easy-to-use 16-channel selection

Full-day usage with no charging

Enriching auditory visitor experiences

Listening accessories for the hearing impaired and hard of hearing

Rechargeable batteries

TRIGGERPOINT

GPS TOUR ENTERTAINMENT

Wireless tour entertainment in multiple languages simultaneously.

Reliable, accurate, consistent GPS tour entertainment.

GPS triggers any point of interest. Urban and natural environments transform into backdrops for exceptional stories, music and sound effects.



Location Specific Storytelling for Tour Operators

- Automated (GPS triggered), wireless, pre-recorded commentary in multiple languages and topics simultaneously.
- Bring your sightseeing tours to life. Transform urban and natural environments into backdrops for exceptional stories, engaging music and sound effects for compelling passenger experiences.
- Broadcast any language over your PA system.
- Driver/Captain Control Panel for Manual Playback of tour commentaries, any segment, anywhere.
- Additional languages are delivered wirelessly to receivers and headsets.

Content Delivery

- Software manages multilingual and multi-topical audio in wav format CD quality sound.
- GPS Play list and audio tour commentary stored on CompactFlash.
- Easy software setup and USB updates from a laptop or PC (license free).

TriggerPOINT GPS Receiver

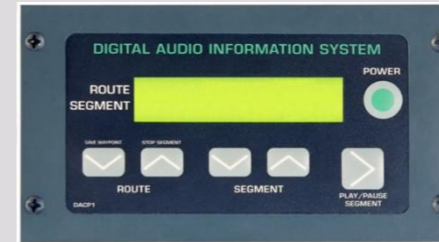


High-sensitivity, 12-channel receiver continuously tracks satellites and reports your precise position

The GPS receiver offers excellent performance and can be used near mobile computing devices and wireless communications equipment without worrying about interference

Waterproof design allows continuous exposure to prevailing weather conditions

TriggerPOINT Driver/ Captain Control Panel



Backlit Driver/ Captain Control Panel

Select Route

Displays Current Point of Interest When Audio is Playing

Displays Selected Tour (Supports Multiple Tours or Tour Routes)

Select Point of Interest for Manual Play

Play, Pause and Stop Audio

Commentaries

Select Language for Audio Out (Any Language over a Public Address System)

System Power On/ Off

TriggerPOINT

Charger – 36 Unit Portable Case



High-quality, durable 36-unit charger case

Gravity fed design that allows for rapid collection and distribution of your wireless receivers

Charging time 4 ~ 5 hours

Two carry case handles and wheels for easy transportation

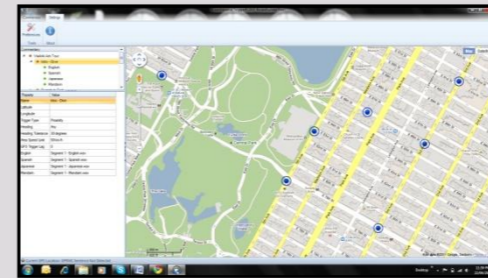
Rechargeable battery life; 17 hours for transmitters; 14 hours for wireless receivers

Optional 12-unit charger for smaller tour group applications

Optional Dual-slot charger

TriggerPOINT

GPS Software



Capture and manage GPS trigger points quickly and easily

Supports Directional GPS triggers (audio is triggered by GPS location and direction a coach or vessel is travelling)

Easily define the size of a GPS trigger zone for each Point of Interest (POI) along a tour route

Supports latitude and longitude GPS triggers for busy inner harbours, rivers, lakes and oceans

View GPS triggers on your routes with Google™ maps

License-free – no ongoing licensing costs

Remove Language Barriers

We help sightseeing companies increase sales and attract new customers, enhancing vacation experiences in any language, any topic, anywhere.

Attract New Customers

Gain a leading edge in your market. Your customers will experience the best your tour has to offer in multiple languages and/or topics simultaneously.

Focus on the fastest growing area of tourism today – international travelers.

Meet the demand for foreign language tours by international tour wholesalers (International Pow Wow's #1 request).



Deliver a Big Experience

Windows on coaches, trains, trolleys, trams and tour boats become theatre screens in the real world. Our creative team brings the theatre screens to life using historical re-enactments, character actors, fun facts, legends and folklore to complete the experience. Your visitors are immersed in breathtaking stories, set against backdrops of stunning sound effects and vibrant musical scores.

Reduce Costs

Training investments in new hires for the delivery of live commentary as well as retraining investments in your employees is costly. Our tour solutions allow clients to reduce their costs without sacrificing value, quality, or time-to-market.



“Over the last number of years, we had been working on a concept to completely revamp our tour experiences with a dramatically more entertaining and innovative approach to what we do and how we do it. From the start, AudioConexus laid out a project path with critical milestones for various elements from script drafts to sound production to installation on our vessels. All of the milestones were delivered on time to our satisfaction in a very professional working relationship where our needs were always addressed. We are now delivering GPS audio tours on our boats which exceed our original project scope with very satisfying results. The AudioConexus product and their support is providing our sales and marketing staff with the tools they require to reach new markets and attract new customers.”

Hugh MacKenzie, General Manager
Kingston 1000 Islands Cruises, Kingston

TriggerPOINT Technology

We deliver audio entertainment in the UHF (Ultra High Frequency), frequency bands to meet the requirements of each specific application and tour. Your tour entertainment experience is delivered using digital wav audio files for better than CD quality sound.

TriggerPOINT is a vibration resistant, multilingual GPS tour entertainment system designed specifically for mobile applications such as buses, boats, trolleys, trains, and trams. The system also includes a driver interface for simple and efficient control of the system with manual playback of audio commentaries.

The system is small enough to easily fit into a Wheelhouse or a bus and is assembled with a portable case for easy movement between vehicles and vessels.

The standard TriggerPOINT system provides 4, 8 or 12 channels of audio broadcast to every wireless receiver, powered by 9 - 26 volts DC. The system is scalable and accommodates additional languages as required.

Opening a New World of Possibilities

Our tour solutions provide your buses and boats with high-quality products designed for durability and ease-of-use. This system facilitates manual, automated and simultaneous multilingual pre-recorded commentary.

It can also be used to deliver group tours by a live guide. Designed specifically for mobile applications where portability and flexibility are essential in fleet management, the wireless tour solution removes the operational and visitor restrictions affiliated with hardwired solutions.

Your wireless receiver's multi-channel design enables visitors to select the tour and language of their choice. An easy to use language selection switch is located on top of the receiver. The wireless system is suitable for indoor and outdoor use and allows a visitor to move around freely during the entire journey.

The body-worn wireless transmitter provides Tour Directors, guides, and drivers alike a clear and convenient link with their entire group personally and directly without interfering with other guests.



“Capital Cruises is focused on raising the bar in tourism by providing exceptional sightseeing experiences in multiple languages simultaneously. We’re bridging the gap between product availability and foreign language market demands while providing better touring experiences for our guests. AudioConexus gives us another market leading edge that creates new revenue from increased ticket sales while further differentiating our business as a must-see experience in the Nation’s Capital.”

Kurt Huck, President
Capital Cruises, Ottawa



"I'm thrilled to be using GPS audio systems on our coaches. The tour allows me to offer my guests' better service and an even better tour. The tours were designed in such a way that I can add my own commentary in a complimentary manner, adding my personal flair as a tour guide driver for Gray Line San Diego. I like to share things such as current news, what's happening in town as well as some of my favorite stories.

The combination of our automated audio tour and our live driver commentary means our guests always receive a great experience."

Dave Golston, Driver and Tour Guide
Gray Line, San Diego

AudioConexus Inc.

556 O'Connor Drive, Suite 129, Kingston, Ontario CANADA
T. 905 492 1300 • F. 905 492 1301

info@audioconexus.com

www.audioconexus.com

Our Higher Purpose

Our Higher Purpose is to captivate the imagination by creating exceptional entertainment experiences about our world - shared experiences that inspire the human spirit and unite us in discovery.

The Importance of Storytelling

Storytelling is the heart and soul of a great tour narrative. An effective guided tour has more than a beginning, a middle and an end; it has a point.

Like a good story well spun, a great tour narrative forges an imaginative connection between teller and told. A great tour, with a great story as its core and context, is infused with its own particular magic and energized by its own unique electricity. One is drawn subtly and irresistibly into an experience that is inevitably "more than meets the eye," and from which one emerges with a broader, deeper understanding, if not a more visceral sense, of place, history and character.



AUDIOCONEXUS